



**Guide to Driver Installation for the
USB to RS-232 Adapter**

This guide describes the process for installing the necessary drivers for operation of the USB to RS-232 adapter.

Note:

When connecting the adapter to the host computer USB port, Windows will likely automatically install the necessary drivers to operate the device. This document applies to those circumstances where the operating system does not automatically install those drivers, prompting the user to provide input. This guide provides instruction on steps required to install the drivers manually from the supplied CD.



1. Plug the male USB plug portion of the adapter into an available USB port on the host computer. If Windows locates and installs the necessary drivers, you will receive a notification balloon (it usually will appear in the lower right portion of the screen) stating that Windows has finished installing the drivers and the device is ready for use. In that case, no further action is necessary. However, if the “Found New Hardware Wizard” appears (Figure 1), proceed to step 2.



Figure 1. “Found New Hardware Wizard”

- When the wizard appears, and you are prompted to allow Windows to connect to Windows Update to search for software (drivers), select “No, not this time” and then click the “Next” radio button (Figure 2).



Figure 2. “Found New Hardware Wizard”

- The wizard then prompts the user to select a means of locating the required software (drivers). Select “Install from a list or specific location (Advanced)”, and then click the “Next” radio button (Figure 3).

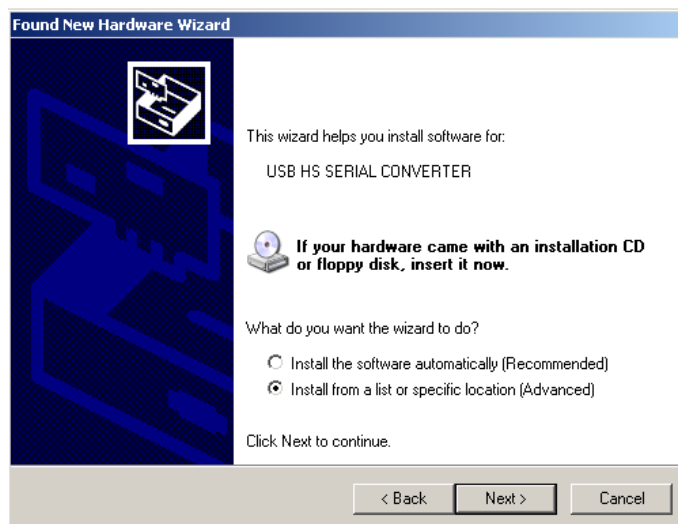


Figure 3. “Found New hardware Wizard”

4. Insert the supplied mini CD (Figure 4) into the host computer CD-ROM drive. If it begins to auto play, or if a Windows Explorer window opens, cancel or close those operations/windows.



Figure 4. Mini CD

5. The wizard then prompts the user to select the search and installation options (Figure 5). Perform the following as is reflected in the figure:
 - a. Click the “Search for the best driver in these locations.” Radio button.
 - b. Check both boxes beneath it [“Search removable media (floppy, CD-ROM...)” and “Include this location in the search:”].
 - c. Select the “Browse” button to the right of the pull-down menu.

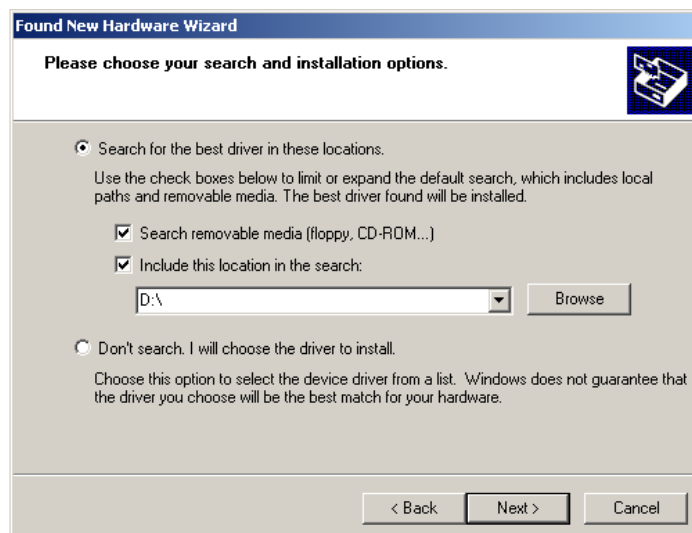


Figure 5. “Found New Hardware Wizard”

6. The “Browse For Folder” window appears (Figure 6). Locate the drive letter where the mini CD was loaded. Click the plus sign to the left of the drive letter to expand the contents of the drive.

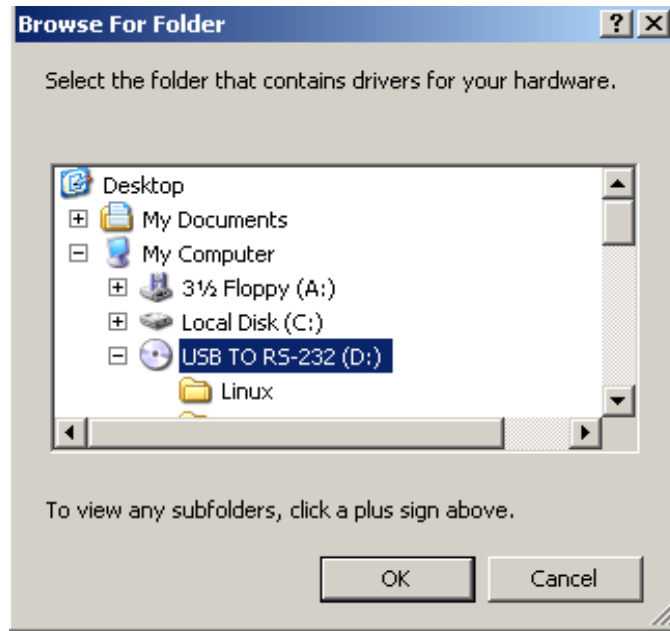


Figure 6. “Browse For Folder” window

7. From the list of folders that appear, select the Windows-based operating system which is installed on the host computer by highlighting it (Figure 7). Click the OK button.

Note:

Although additional operating systems are available for selection in the “Browse For Folder” window, only Windows-based systems are compatible with the *DSA-7* and *ASXpress*. Therefore, only Windows-based selections apply to this adapter, used with the *DSA-7* and *ASXpress* instruments.

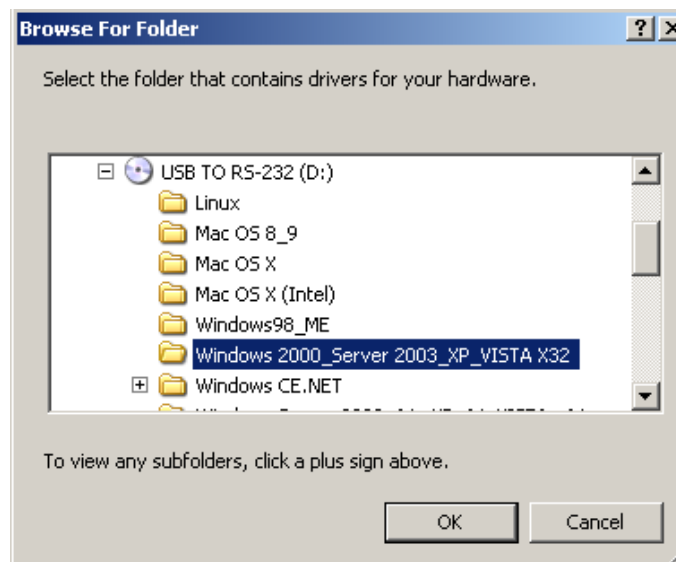


Figure 7. “Browse For Folder” window

8. The “Found New Hardware Wizard” window reappears. The selected file folder now appears in the drop-down box (Figure 8). Verify that this is the desired file folder. Click the next button to proceed.

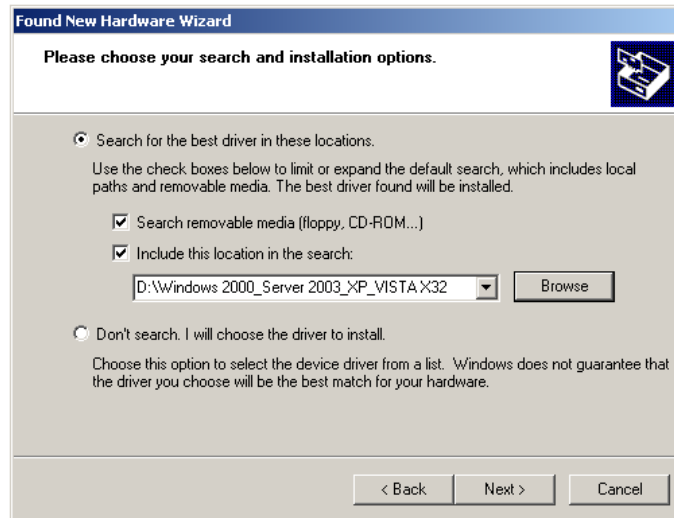


Figure 8. “Found New Hardware Wizard”

9. Wait while the wizard locates (searches) and installs the selected software (drivers) onto the host computer (Figure 9).

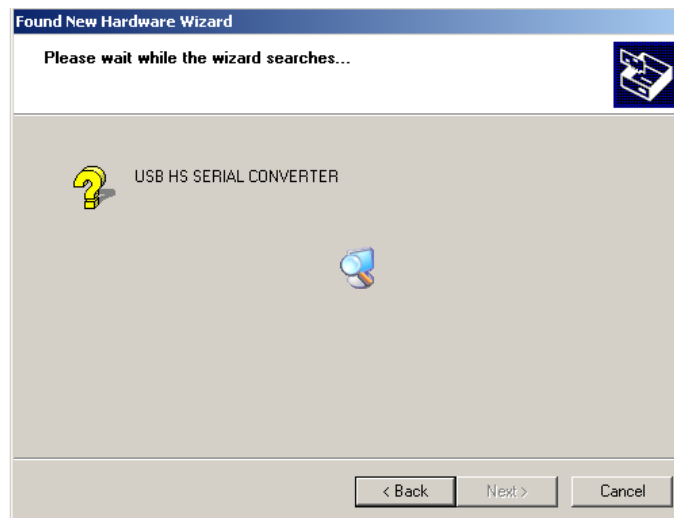


Figure 9. “Found New Hardware Wizard”

10. The “Completing the Found New Hardware Wizard” window now appears (Figure 10). The software (drivers) has now been successfully installed. Click the “Finish” button to complete the wizard. **The USB to RS-232 adapter is now ready for use.**

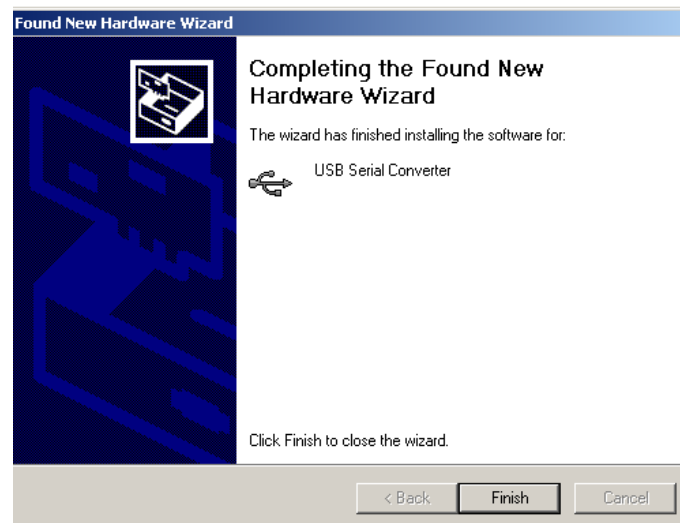


Figure 10. Completed “Found New Hardware Wizard”