

ASX-500 Series

OEM Autosampler Platform

RUGGED OEM AUTOSAMPLER

CETAC AUTOMATION



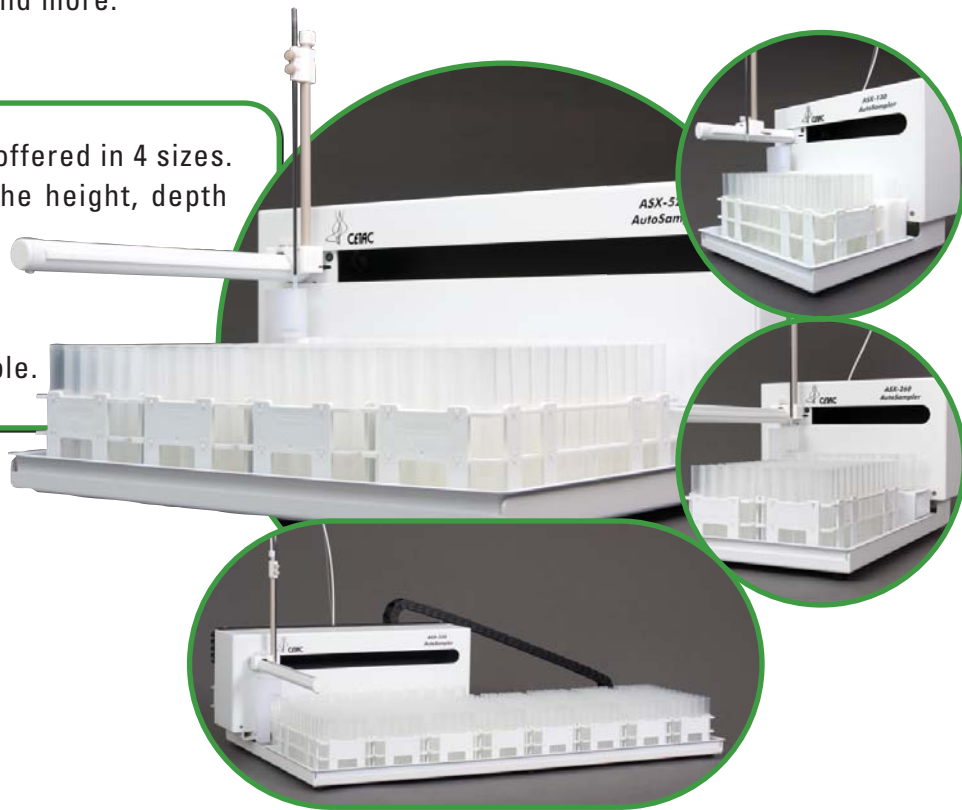
ASX-500 SERIES OEM PLATFORM

The platform that started it all, CETAC Automation responded to customer demand in 1993 and produced the ASX-500 platform. With well over 15,000 systems strong and growing each year, this has become known as the work horse in many industries and laboratories. The simple design allows for endless operation and unprecedented performance. The ASX-500 platform is highly customizable for a wide range of automation applications, including AA, ICP, ICP-MS, TOC, UV-VIS, HPLC, fraction collection, liquid handling, and more.

SIZE THAT FITS

The ASX-500 platform is offered in 4 sizes. Platform design allows the height, depth and tray requirements to easily be modified to fit your application.

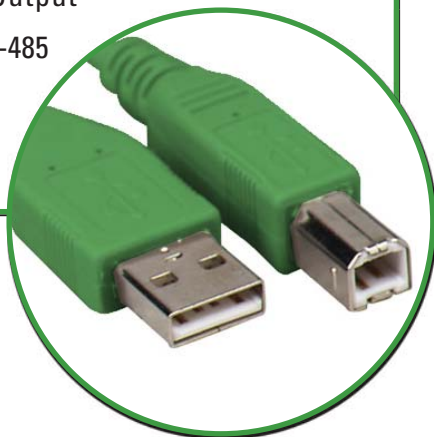
Custom sizes also available.



COMMUNICATIONS

CETAC offers a flexible array of interface options to accommodate your application. CETAC has the experience of completing over 100 host instrument interfaces from over 50 manufacturers.

- 5 Input/5Output
- RS-232/RS-485
- USB
- Custom



RACK OPTIONS

Accommodates a wide range of commercially available racks. We also design and build custom racks for your vial or bottle.

- Racks for 2ml vials up to 500ml bottles
- Custom racks available



TECHNOLOGY THAT FITS

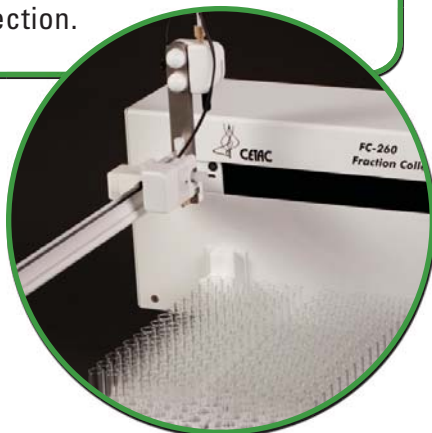
SYRINGE PUMPS

Accommodates multiple syringe pumps and a wide range of available syringes with volumes from 12.5 μ l to 25 ml.



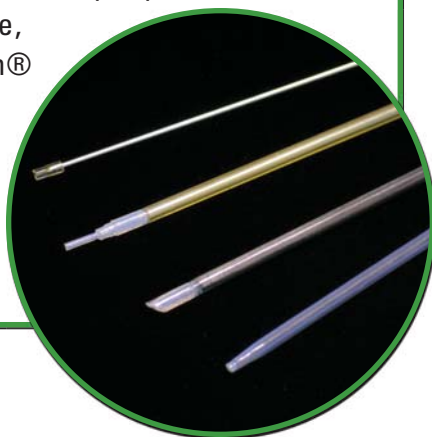
FRACTION COLLECTION

The ASX-500 platform is available configured for fraction collection.



SAMPLE PROBES

Wide selection of sample probes from which to choose, including Teflon® encapsulated carbon fiber and glass lined stainless steel.



SIMPLE

Easy Set-Up and Operation: Out-of-the-box set-up allows a fully operational system the day of delivery.

Internet Accessible Firmware: Downloadable firmware from the Internet simplifies the reprogramming process.

ROBUST

Corrosion Resistant: Sealed electronics chassis, conformal coated electronic boards and coated main driver screw protect against the harshest of chemical environments.

Superior Material Construction: Inert, metal-free PTFE and PEEK liquid flow path decreases sample contamination risk and prolongs the life of the instrument.

Motor Torque: Powerful X, Y, Z axis movement resists effects of environmental buildup.

ACCURATE

Never Misses a Cup: Precision engineered automated sample probe arm and stationary sample racks virtually eliminate errors.

Auto-Zero Feature: Intelligent sample probe re-homing device dramatically reduces accidental sample intake errors.

Integrated Rinse Station: Continuous flow sample probe rinse station with peristaltic pump minimizes sample contamination and carryover.

ASX-500 SERIES PLATFORM SIZES

ASX-130 Compact Autosampler

Ideal for lower sample capacity applications, this small and efficient autosampler provides all of the features of a larger CETAC Autosampler in a compact, single rack version to preserve precious laboratory bench space.



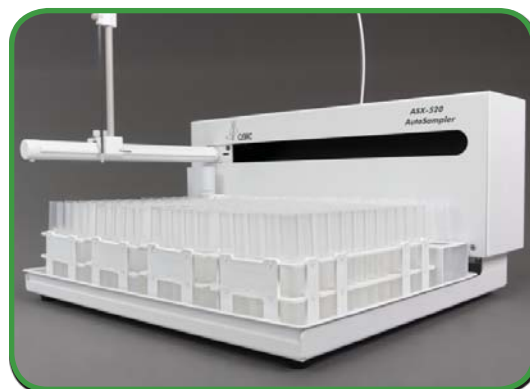
ASX-260 Versatile Autosampler

Positioned between the ASX-130 and the ASX-520, this autosampler combines all of the features of the larger CETAC Autosampler into a smaller two-rack design ideal for low to medium sample capacities while saving laboratory bench space.



ASX-520 Rugged Autosampler

Our flagship autosampler which has become known as "The Workhorse" for many industries and laboratories. This fully automated sample introduction system is ideal for higher sample capacity applications.



EXR-8 Extended Rack Autosampler

A fixed tray and traveling head autosampler provides the highest capacity for long, unattended sample runs while reducing valuable bench space requirements.



Technical Specifications

Space Requirements

	ASX-130	ASX-260	ASX-520	EXR-8
Height	61 cm (24")	61 cm (24")	61 cm (24")	61 cm (24")
Width	33 cm (13")	33 cm (13")	52 cm (20½")	95.2 cm (37½")
Depth	33 cm (13")	50.8 cm (20")	48.2 cm (19")	53.3 cm (21")
Weight	8.4 kg (18.5 lbs)	8.4 kg (18.5 lbs)	10.5 kg (23 lbs)	19.5 kg (42 lbs)

Working Area

Axis	ASX-130	ASX-260	ASX-520	EXR-8
X	22.2 cm (8.75")	22.2 cm (8.75")	40.9 cm (16.1")	81.8 cm (32.2")
Y	12.7 cm (5.0")	29.0 cm (11.4")	27.0 cm (10.6")	27.0 cm (10.6")

Speed

Axis	Min Speed	Max Speed
X	70 mm/sec	370 mm/sec
Y	70 mm/sec	340 mm/sec
Z	70 mm/sec	430 mm/sec

Communication Interface

2x Serial (RS-232)
 USB (virtual COM port)
 5 auxilliary inputs / 5 outputs

Power Requirements

100-240VAC, 47-63Hz, 1.9A

Autosampler Control Utility

*SpeedShift** configuration tool for control of axis and rinse pump speeds

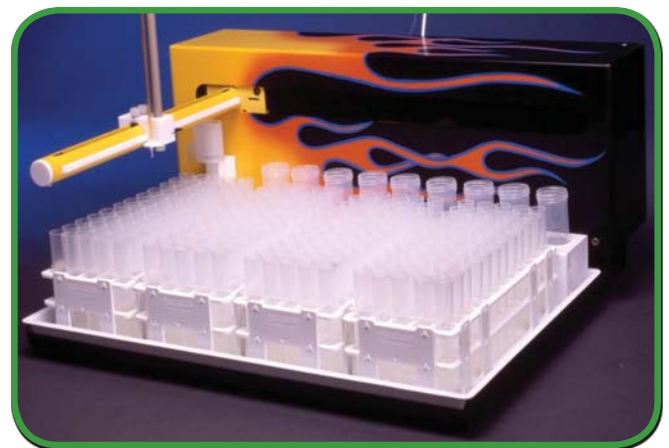
**applies to non-"fixed time move" version autosamplers*

Options

Clean Enclosure (ENC-500);
 Offline Sample Dilutor (SDS-550);
 Online AutoDilutor (ADX-500);
 ASXPRESS™ PLUS Rapid Sample Introduction System

Customization

The ASX-500 autosampler series platform is designed for maximum flexibility. All technical specifications are subject to change based on customer requested parameters. Contact your CETAC representative or visit cetac.com/automation/oem_services for further information.





CETAC Technologies
14306 Industrial Road
Omaha, NE 68144 USA

PHONE 402.733.2829

TOLL FREE 800.369.2822

FAX 402.733.5292

EMAIL oem@cetac.com

cetac.com/automation/oem_services