



C-Term™ Users' Guide

C-Term is a simple serial [RS-232] terminal program developed to validate the installation and functionality of various CETAC devices. If the communications interface between the CETAC device and the host computer is not established correctly, the device will not function. Before you test the interface, ensure that the communication port connectors are properly attached between the host computer and the CETAC device.

Note:

The following procedures assume that you are running Windows® NT 4 or a newer version of Windows®.

Getting Started

By default, the installation program will create an icon on your desktop. To start C-Term, double click the icon on your desktop or select in the Windows **Start** menu “**Programs | CETAC Technologies | C-Term**”.



Figure 1. C-Term icon

Once C-Term is loaded, the window shown in Figure 2 will open. The majority of C-Term's functions are available from this window and are labeled below.

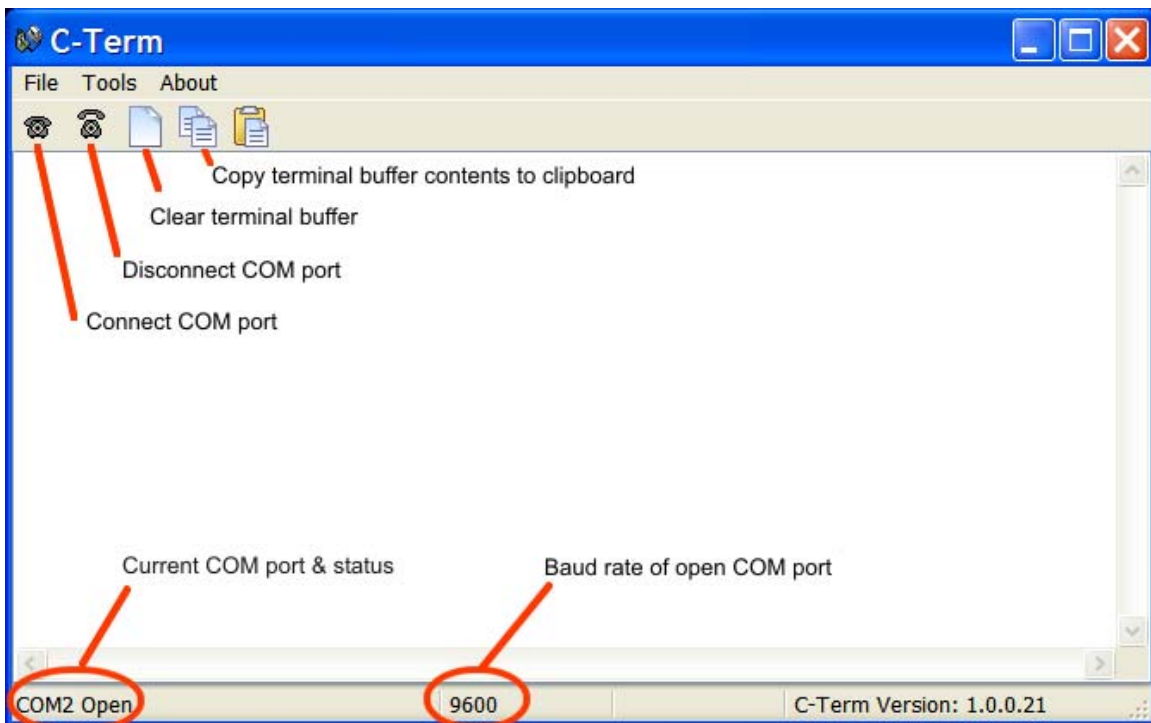


Figure 2. C-Term window

Using C-Term

By default, whenever a COM port is open, as shown on left end of the status bar, typed commands are automatically sent to the CETAC device connected to that port and the text will appear in light green in the terminal buffer. Responses from the device will appear in red as illustrated in Figure 3.

Note:

Non-printing characters such as carriage returns will appear surrounded by square brackets e.g. [0D]

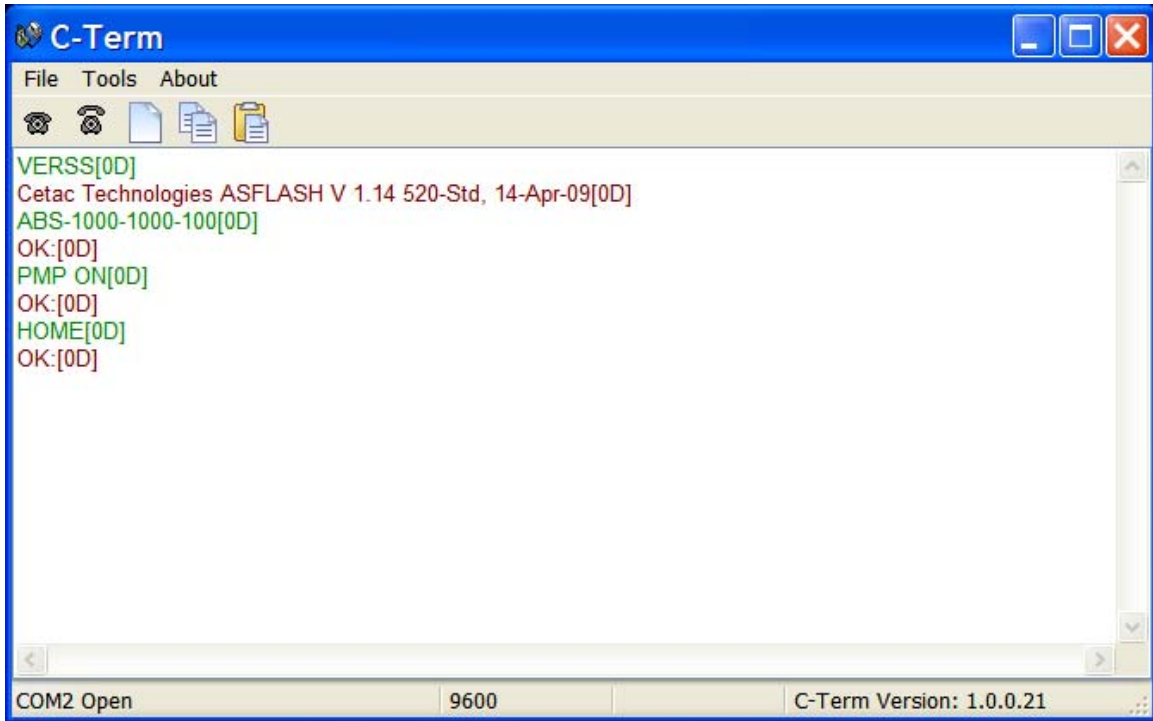


Figure 3. Outgoing commands shown in green and incoming responses shown in red

Configuring C-Term

By default, C-Term attempts to open COM1 the first time it is executed. The default communications configuration is appropriate for use with the vast majority of CETAC devices. Exceptions are the ASX-8000 which requires a baud rate change and the AS300 emulator which uses non-printing characters as part of its command protocol. Modifying the default settings is described below.

Note:

If COM1 (or the currently selected COM port) is in use by another program or is otherwise unavailable, a warning dialog box will pop up when C-Term starts stating that the COM port could not be opened.

If the COM port that the CETAC device is connected to is not the default (COM1), then it will be necessary to configure C-Term to use the desired port. To do this, select **Tools|Setup Serial Port** from the *main* menu. The window in Figure 4 will appear.

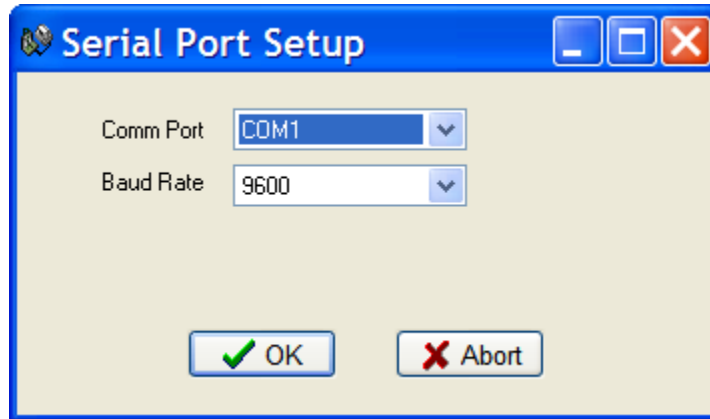


Figure 4. Serial Port Setup window

From the drop-down menu, select the desired COM port. If necessary, select the Baud rate used by the connected device. Click **OK**. The window will close and the settings will be saved. These new settings will be applied immediately and used thereafter unless changed again.

Note:

Excepting the ASX-8x00 all CETAC devices communicate at 9600 baud (which is the default.)

Note:

Only installed COM ports, including USB virtual COM ports, will appear in the **Comm Port** drop-down menu.

Preferences

If desired, the size of the scrollbar buffer or the color of the outgoing and incoming texts can be changed (to work around color blindness, for example). To access the preferences, select **Tools | Preferences** from the *main* menu. The window in Figure 5 will appear.

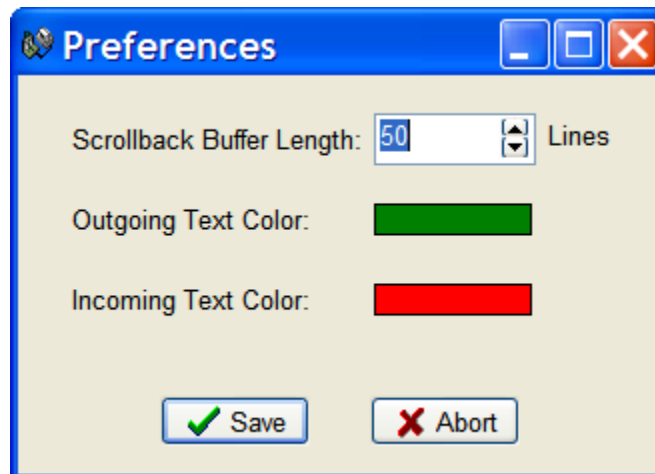


Figure 5. Preferences window

To change the Scrollback Buffer Length, either type the new value in the field or use the arrows adjust the value up or down. To change text color, click on the color bar and a color selection dialog box will appear. Select the new color and click **OK**. Click **Save** to apply your settings and close the window.